

RL42™ / RB42™

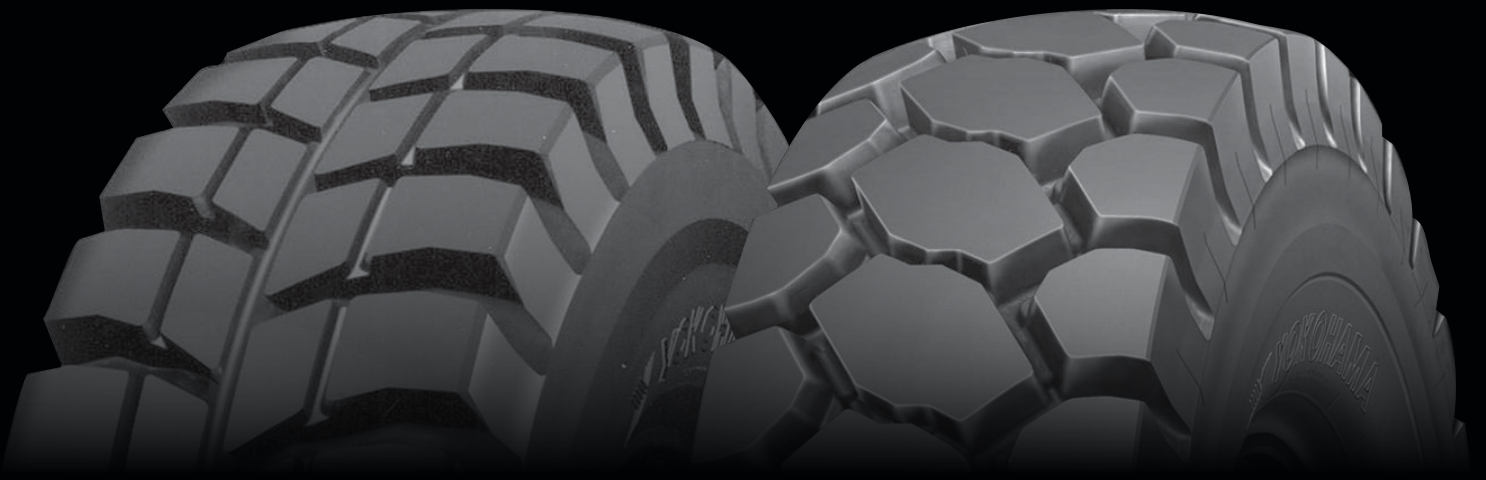
RADIAL TIRE



UNMATCHED DURABILITY & VERSATILITY.

- *E-4 Earthmovers and Dump Trucks*

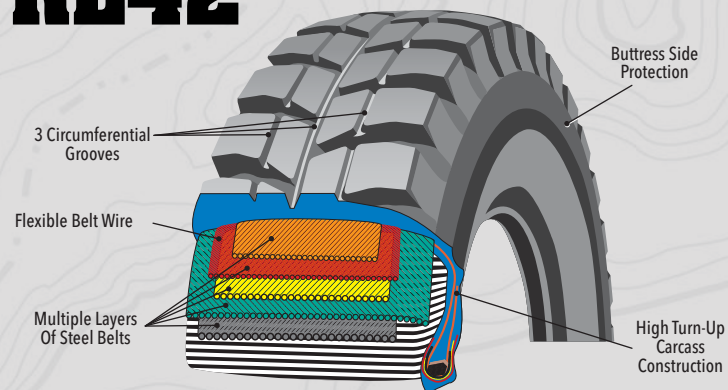
 **YOKOHAMA®**



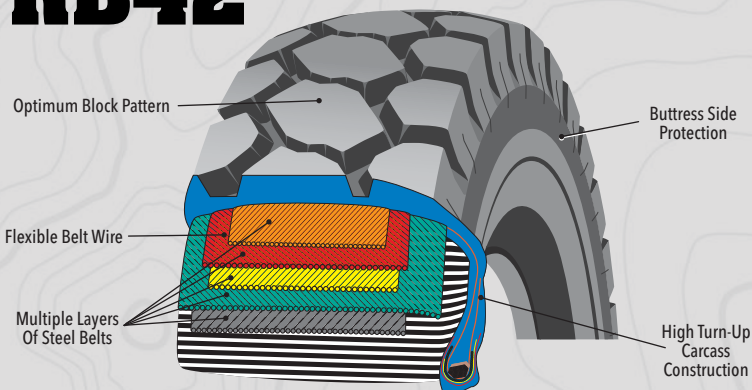
TWO UNIQUE TIRES FOR TWO UNIQUE APPLICATIONS.

Whether you need a dump truck tire designed for long hauls on packed surfaces or one that can conquer a wide range of loose material, our RL42™ and RB42™ tires are engineered to get the job done. Beginning with an advanced casing that resists cuts and punctures, we add unique tread and sidewall designs to create specialized tires for specific applications. Yokohama engineers tires to handle specific jobs—including yours.

RL42™



RB42™



Circumferential Grooves

Effectively dissipate heat to run cooler, enabling long-haul capabilities at the job site.



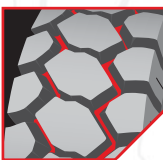
Directional Tread Pattern

Improves self-cleaning for increased traction and stability.



Deep, Wide Grooves

Help expel mud and dirt for enhanced traction.



Zig-Zag Groove Pattern

Provides better traction on muddy and rocky surfaces.



Large Center Blocks

With a non-directional pattern increase resistance to cuts and decrease overall wear rate.

RL42 and RB42

Both share an extremely durable casing and premium tread compound.

MULTIPLE COMPOUNDS AVAILABLE

allows tires to be customized for specific applications.*

*Available compounds: CP-S, CP, HR, REG

STEEL CORD BELTS

guard against tread punctures for longer life.

DEEP TREAD

provides excellent traction and long-lasting tread life.

BUTTRESS SIDE PROTECTION

protects sidewall from snags and cuts for improved durability.

RL42 E-4

Size	Part#	Compound	Star Mark	Groove Depth	Rim Size	Inflated Dimensions		Loaded Dimensions		Ship Weight	TMPH
						Overall Diameter (in.)	Overall Width (in.)	Static Radius (in.)	Static Width (in.)		
18.00R33	42000	CP	**	63	13.00x33-2.5	73.6	20.0	33.7	22.4	966	115
18.00R33	42008	HR	**	63	13.00x33-2.5	73.6	20.0	33.7	22.4	971	171
24.00R35	42006	CP	**	74	17.00x35-3.5	85.2	25.5	38.5	29.5	1719	190
24.00R35	42007	HR	**	74	17.00x35-3.5	85.2	25.5	38.5	29.5	1598	289

RB42 E-4

Size	Part#	Compound	Star Mark	Groove Depth	Rim Size	Inflated Dimensions		Loaded Dimensions		Ship Weight	TMPH
						Overall Diameter (in.)	Overall Width (in.)	Static Radius (in.)	Static Width (in.)		
18.00R33	04201	CP	**	70	13.00x33-2.5	73.6	20.0	33.7	22.4	968	115
18.00R33	14210	HR	**	70	13.00x33-2.5	73.6	20.0	33.7	22.4	979	171
24.00R35	04210	CP-S	**	80	17.00x35-3.5	85.4	25.8	38.5	29.3	1620	173
24.00R35	04203	CP	**	80	17.00x35-3.5	85.4	25.8	38.5	29.3	1613	190
24.00R35	04206	REG	**	80	17.00x35-3.5	85.4	25.8	38.5	29.3	1597	208
24.00R35	04216	HR	**	80	17.00x35-3.5	85.4	25.8	38.5	29.3	1611	289
27.00R49	04209	CP-S	**	93	19.50x49-4.0	105.6	28.9	48.0	32.7	2929	240
27.00R49	04204	CP	**	93	19.50x49-4.0	105.6	28.9	48.0	32.7	3016	295
27.00R49	04205	REG	**	93	19.50x49-4.0	105.6	28.9	48.0	32.7	3000	367
27.00R49	04213	HR	**	93	19.50x49-4.0	105.6	28.9	48.0	32.7	2918	422
33.00R51	04207	CP	**	115	24.00x51-5.0	120.5	36.2	54.3	40.2	5071	411
33.00R51	04208	REG	**	115	24.00x51-5.0	120.5	36.2	54.3	40.2	5071	466

Yokohama Tire Corporation

1 MacArthur Place Suite 800, Santa Ana, CA 92707

Toll Free: 800.423.4544

yokohamaotr.com

©2018 Yokohama Tire Corporation



OTS-0356-0418